

Pattern 578

Width : 119 stitches

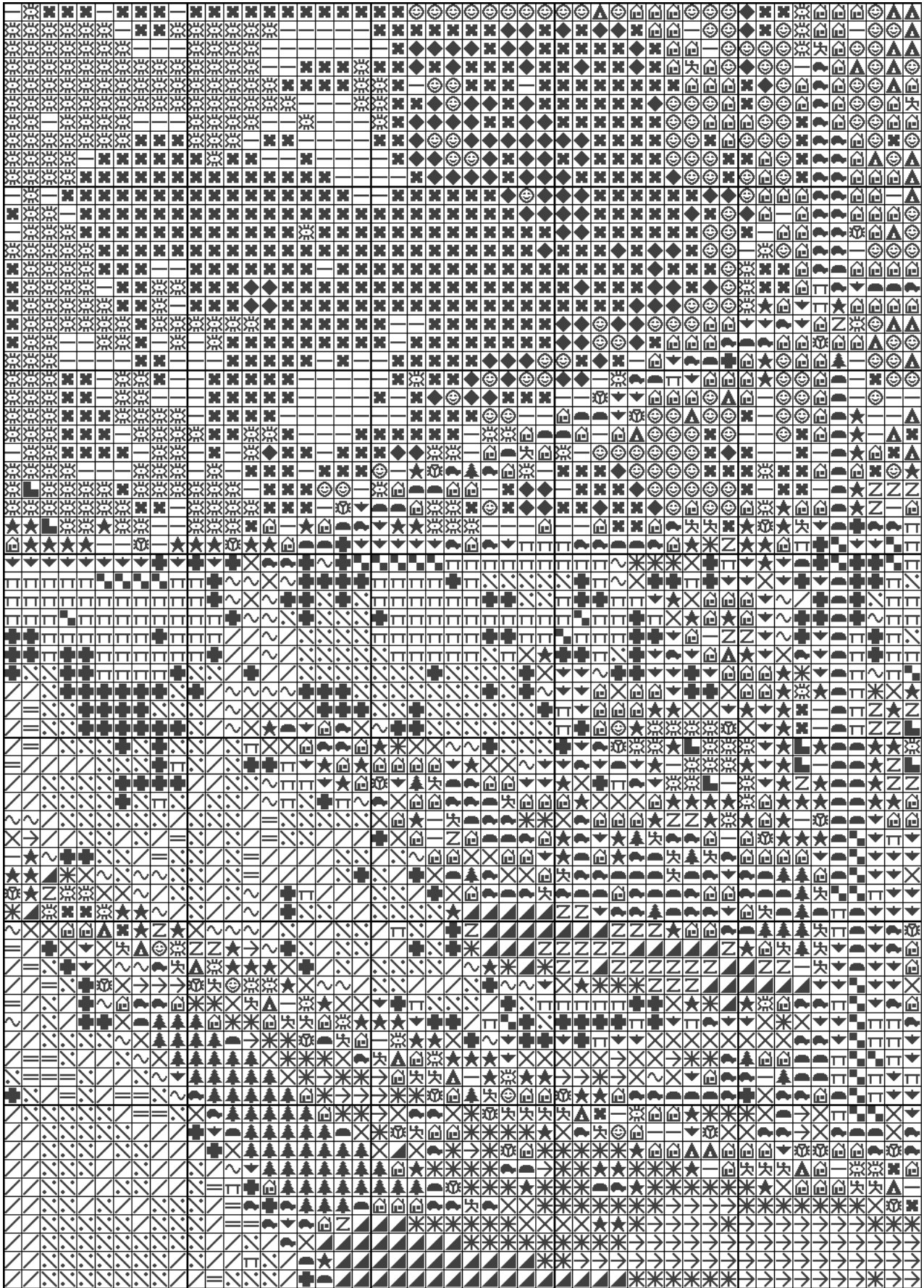
Height : 84 stitches

Used floss brand : Anchor

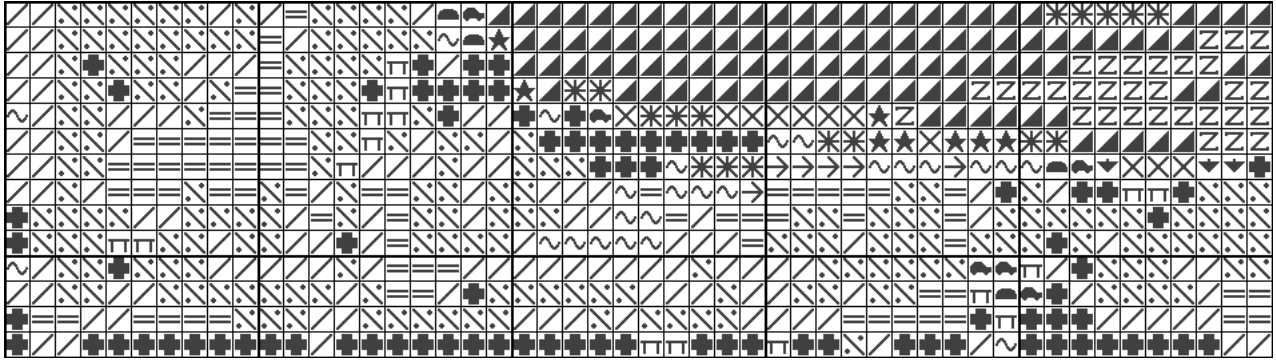
Used colours (28):

—	1039
☀	131
☒	977
☺	975
▲	140
🏠	860
◆	976
⚡	130
★	851
🐼	376
Z	123
🏠	872
🌄	388
🌲	398
▼	843
📐	139
Π	363
⊕	365
📐	382
📐	887
✳	381
✕	889
∞	310
∕	1001
∕	308
≡	1015
→	20
+	1

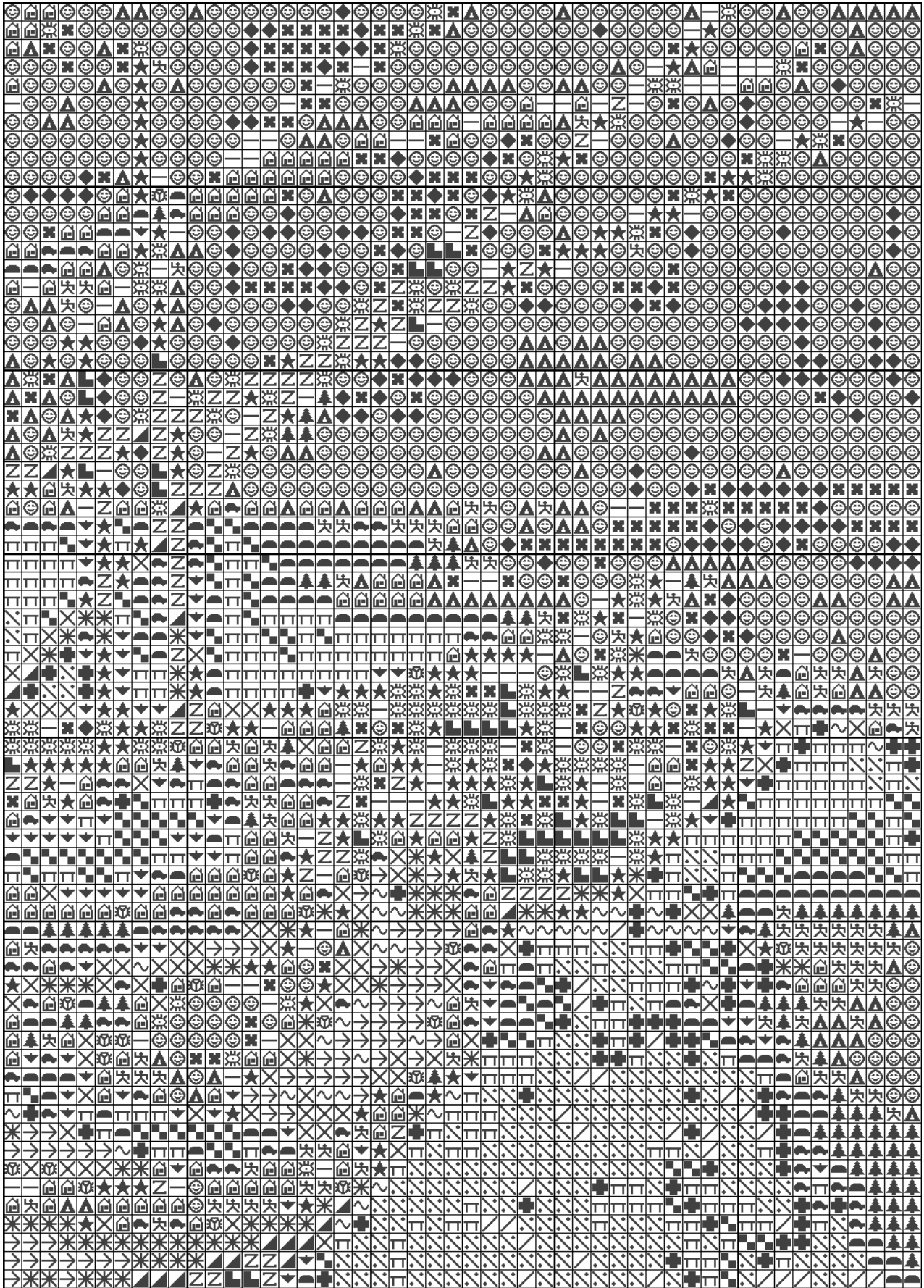
Pattern 578



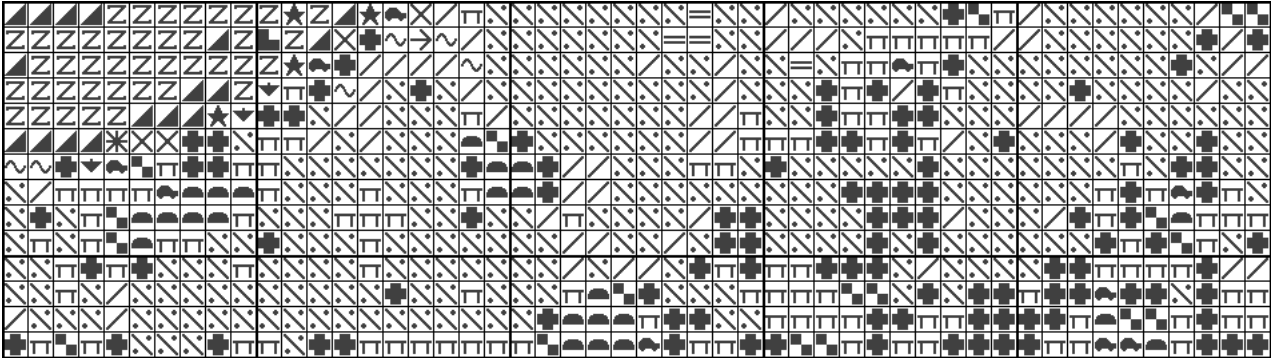
Pattern 578



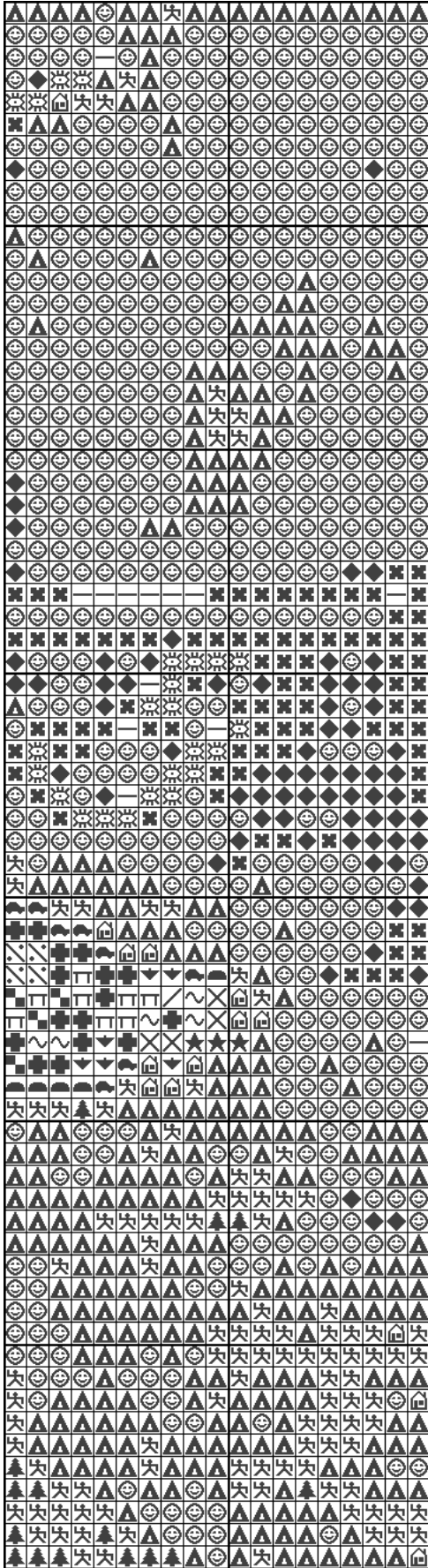
Pattern 578



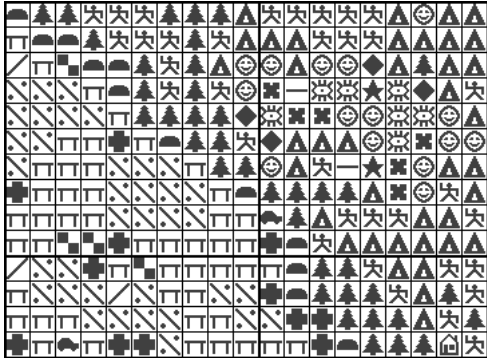
Pattern 578



Pattern 578



Pattern 578



Pattern 578

Pattern map

