

Pattern 578

Width : 119 stitches

Height : 84 stitches

Used floss brand : Anchor

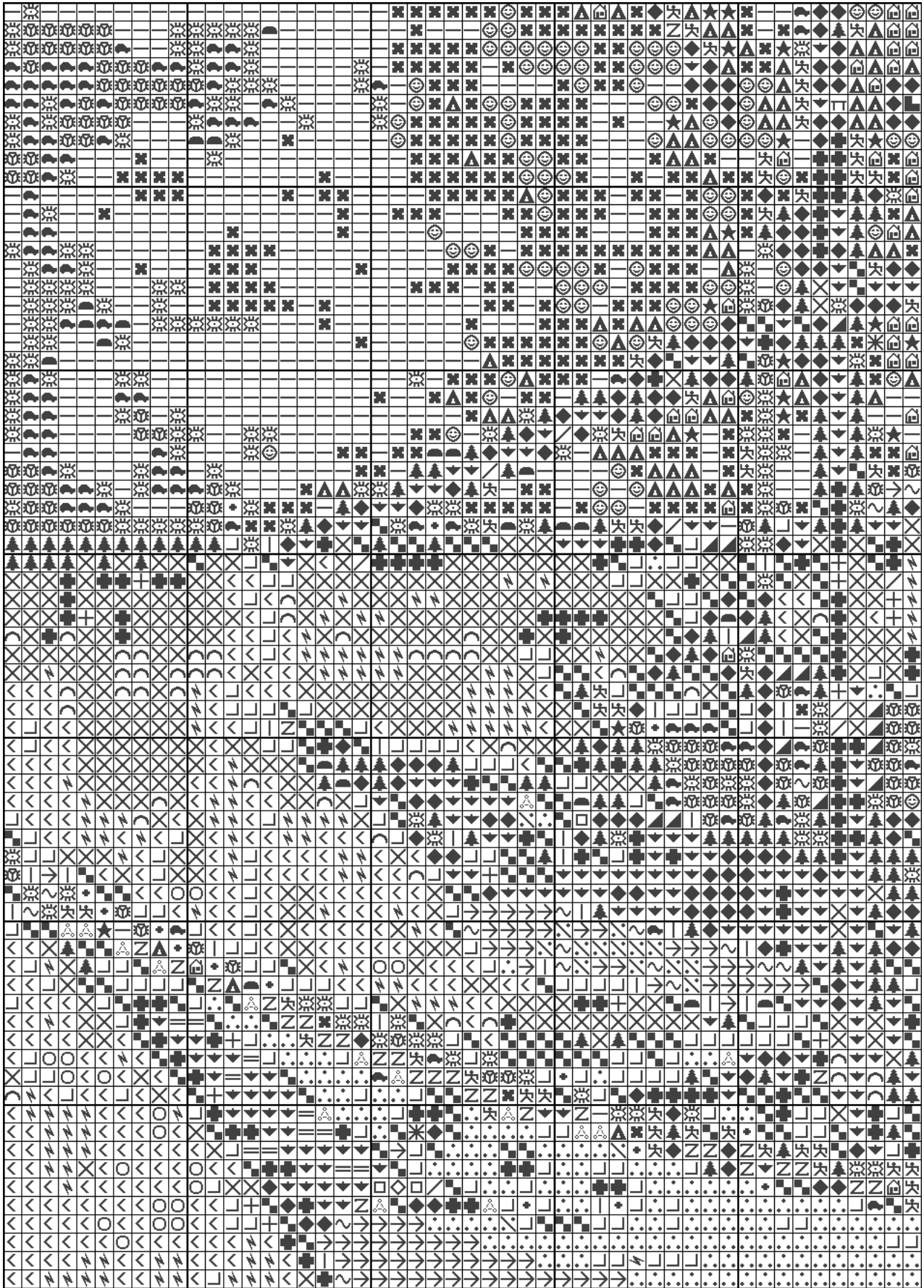
Used colours (47):

—	977
☀	920
☒	976
☺	136
▲	975
🏠	140
◆	860
♠	176
★	144
🐼	941
Z	1033
🛡	164
🌄	921
🌲	243
▼	367
📐	130
π	859
⊕	368
📐	244
📐	378
✳	175
✕	363
∞	149
∕	127
∕	890
≡	95
→	382
+	142
└	936
	878
+	361
<	308

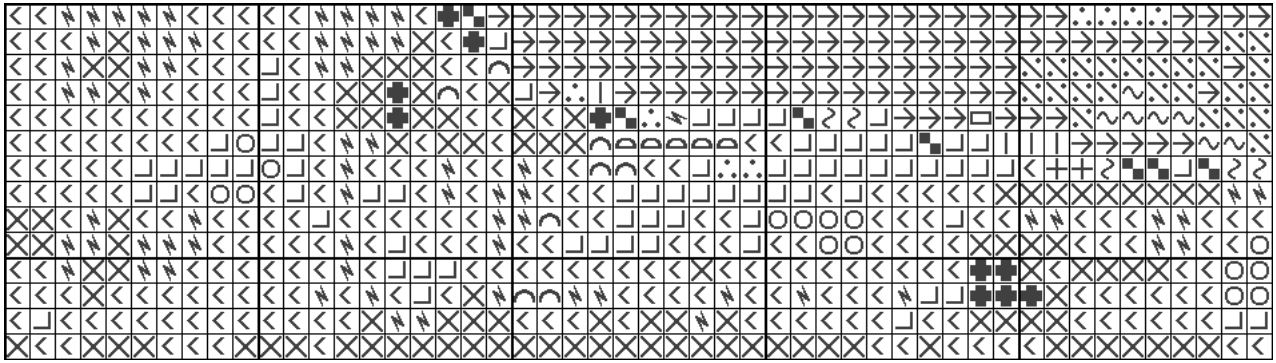
Pattern 578

∴	381
⚡	1001
☹	900
☾	307
○	330
⚙	109
□	842
△	139
◇	342
⚡	352
☆	123
~	370
□	403
D	365
◁	1

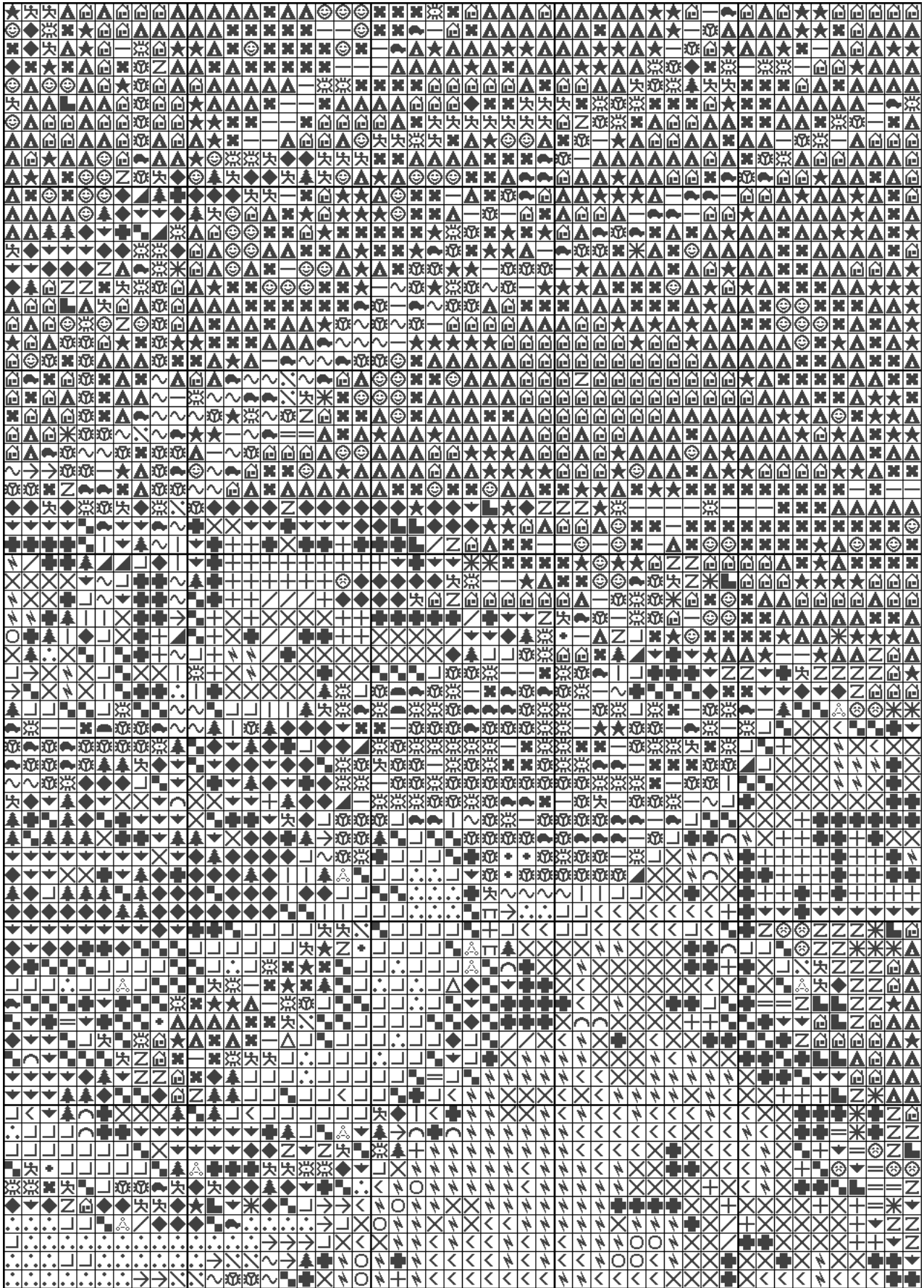
Pattern 578



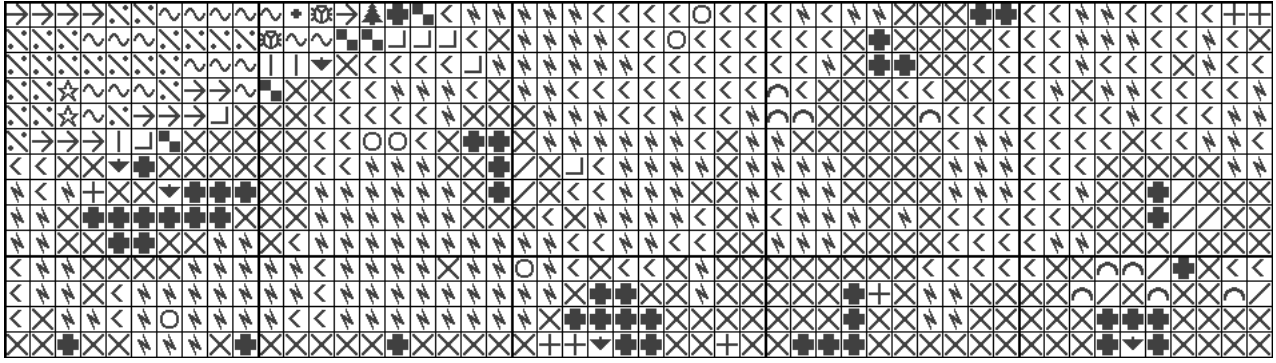
Pattern 578



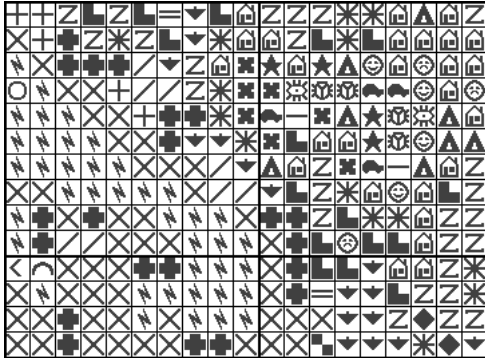
Pattern 578



Pattern 578



Pattern 578



Pattern 578

Pattern map

Page 3	Page 5	Page 7
Page 4	Page 6	Page 8